

EvoTouch⁺

HIGH DEFINITION
IMAGING
UNDER **ANY**
CIRCUMSTANCES



Interventional imaging
ultrasound platform



LUMIBIRD[®]
MEDICAL

EvoTouch⁺

Interventional imaging

Quantel Medical, a world leader in ophthalmic ultrasound, is offering a new ultrasound machine designed for people who need high-definition imaging.

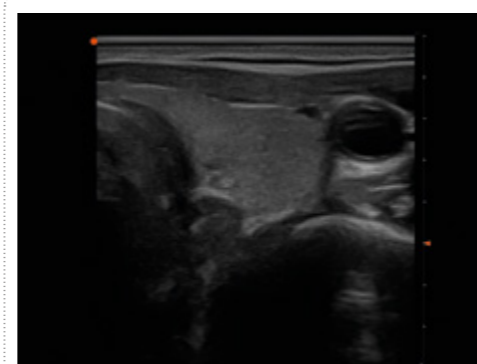
A Powerful, **portable ultrasound machine**, carefully developed to **adapt to your working environment**.

■ HIGH-DEFINITION IMAGING:

- To **refine** your diagnoses.
- To **unblock** a clinical situation.
- To **provide more comfort** when **monitoring** and **screening** certain pathologies.
- To **inform the patient** with a high-quality image.

■ REDESIGNED ERGONOMICS

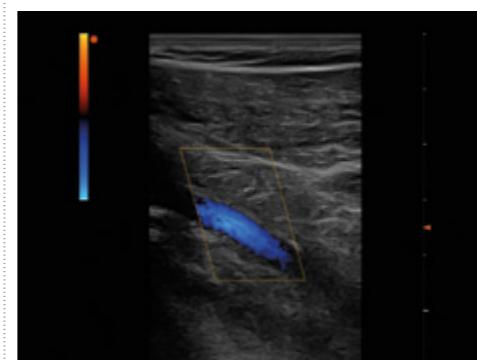
- A **simple and customisable interface** for **rapid control**.
- **Automatic settings** depending on the areas explored.
- **Customisable menus** that can be adapted to the specific needs of doctors.
- **Ultra-fast start-up** for **rapid access to the image**.



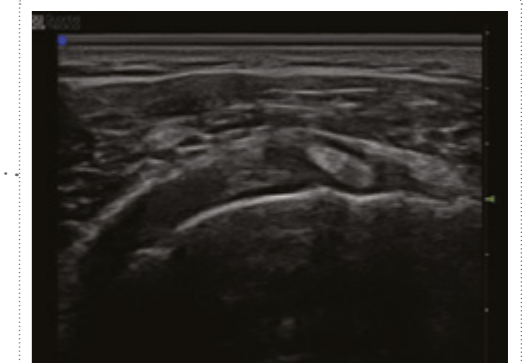
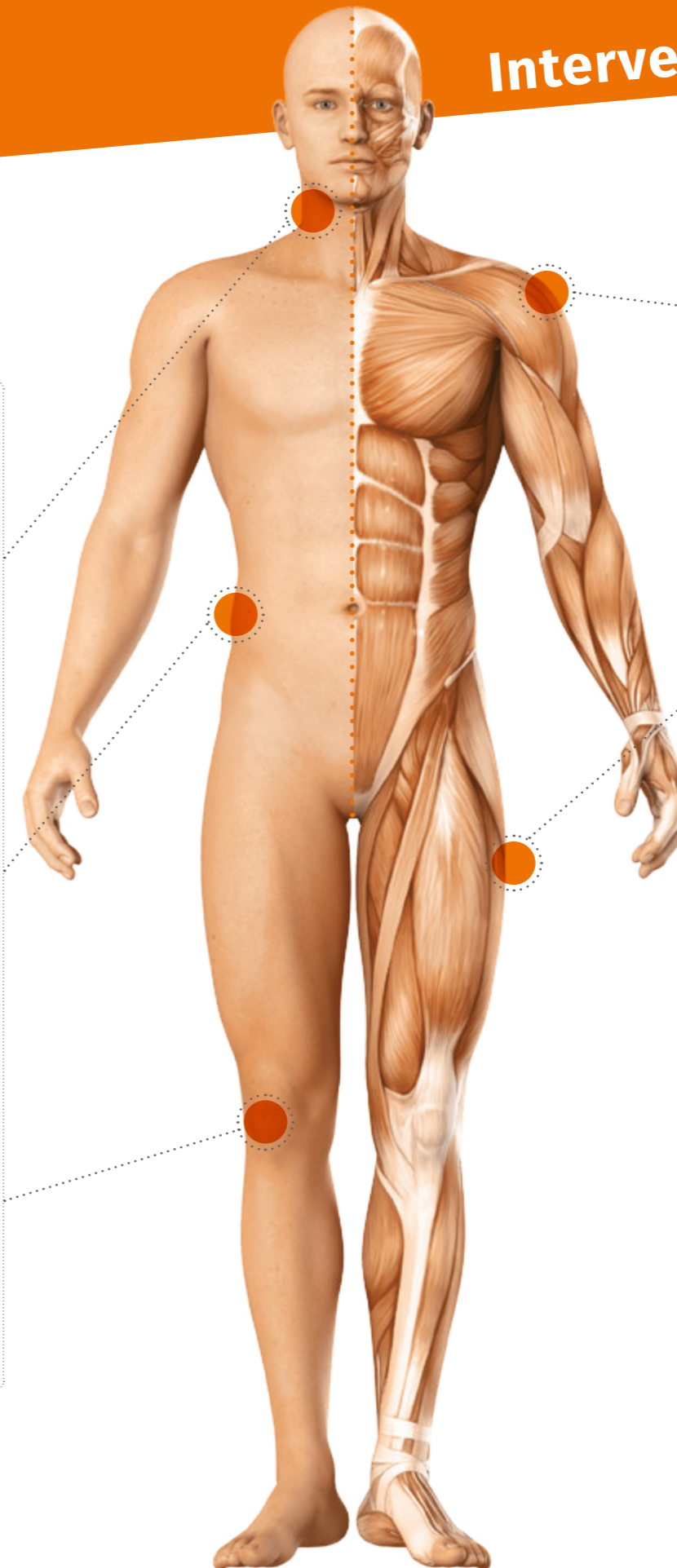
Thyroid



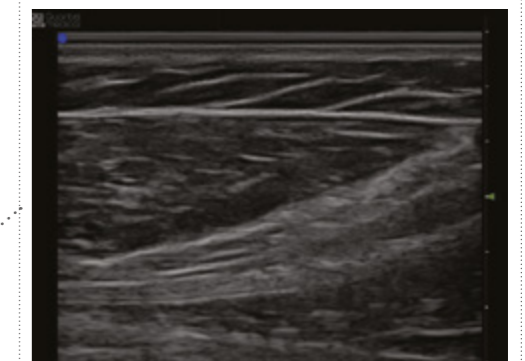
Kidney



Popliteal artery



Shoulder



Leg

■ CONNECTIVITY

- **Compatible** with all types of **servers/software packages**.
- **Facilitates** the management of **patients data**.
- Adapted to material constraints with a **complete connectivity**: ethernet, wifi, DICOM, HDMI and USB.

■ DESIGN

- **Robust touch screen** with a wide vision angle.
- An optimised screen size for an integration of the ultrasound machine in **any type of medical environment**.



EvoScreen
100 % touch-sensitive interface. Simplified cleaning due to the lack of buttons.



■ PROBES

- A complete range of probes to adapt to all imaging needs.
- Ergonomic probe design for an optimum handling.
- Quick and easy change of probes: **Plug & Play.**



■ AN EFFECTIVE **DIAGNOSTIC TOOL**

- For an **immediate answer** to a clinical questioning.
- For a better **screening** and **monitoring of pathologies**.
- For an increasing **diagnostic autonomy**.
- For a **changing** daily practice.

■ A **NEW PATIENT RELATIONSHIP**

- **Increased security** and optimisation of **referrals** to specialists.
- **Increased comfort**: examinations in a familiar environment.
- **Informational** and **sharing** tool.

■ THE ULTIMATE **INTERVENTIONAL IMAGING** ULTRASOUND MACHINE

- **Battery operated** devices (providing 2 hours of life for examinations).
- **Compact size** for more **mobility**.
- Shock-absorbing case, protective shell, and backpack (available as add-ons) to **facilitate transport**.

■ R&D AND PRODUCTION IN **FRANCE**



EvoTouch+



TECHNICAL SPECIFICATIONS

GENERAL INFORMATION

Size	39 cm (W) x 7 cm (D) x 30 cm (H)
Poids:	5.9 kg
Electrical power	
Supply voltage:	100/120 Vac or 220-240 Vac, 50/60 Hz;
Power:	200 W
Power supply:	Mains supply or battery (interchangeable)
Battery life:	2 hours
Charging time (battery):	3 hours
Internal voltage:	Max. 19 V
Tilting screens	
Dimensions in inches:	15" LED-backlit LCD Full touch screen
EvoScreen	
Portrait or landscape mode	
VESA mount	
XGA format display:	Display size: 1024 x 768 Recording area: 1024 x 768
Image ultrasonore :	600 x 600 in landscape mode 600 x 720 in portrait mode
Stereo sound	

IMAGING

Grey levels:	256
Dynamic range:	Up to 200 dB
Imaging modes:	<ul style="list-style-type: none">• B Mode• Dual B Mode• Colour Doppler Mode (CFM-B)• Dual Colour Doppler Mode (CFM-B/B)• Pulsed Wave Mode (PW-B)• M Mode/Anatomic M Mode• Power Doppler Mode (Power Doppler-B)• Dual Power Doppler Mode (Power Doppler-B/B)
Cineloop:	4 Cineloop lengths (adjustable)

CONNECTIVITY AND DATA MANAGEMENT

Probe connectors:	2
USB ports:	2 3.0 USB ports and 2 2.0 USB ports
	1 RJ 45 connector; 1 HDMI video connector; 1 audio jack connector (EvoTouch+); Integrated Wifi.
DICOM:	Store and Print
Printers:	Installation and configuration of laser and thermal printers
Patient files:	Import, export, and consult patient files
Storage:	Integrated hard drive 500 GB



Specifications are subject to change without notice. Non contractual pictures.
©2024. EvoTouch+ is registered trademark of Quantel Medical, Lumibird Medical division.
All rights reserved

Manufacturer
Quantel Medical
1, rue du Bois Joli – CS40015
63808 Cournon d’Auvergne – FRANCE
Tel: +33 (0)4 73 745 745
Email: contact@lumibirdmedical.com
ISO 13485: 2016

Headquarters
Lumibird Medical
1 Rue du Bois Joli - CS40015
63808 Cournon d’Auvergne – FRANCE
Tél. : +33 (0)4 73 745 745

QUANTEL MEDICAL
A brand of



LUMIBIRD®
MEDICAL

www.interventional-imaging.lumibirdmedical.com