

# EvoTouch<sup>+</sup>

# EvoTouch<sup>+</sup>

HIGH DEFINITION  
IMAGING  
UNDER **ANY**  
CIRCUMSTANCES



Interventional imaging ultrasound platforms

# EvoTouch<sup>+</sup> EvoTouch<sup>+</sup>

Quantel Medical, a world leader in ophthalmic ultrasounds, is offering a new line of ultrasound machines designed for people who need high-definition imaging.

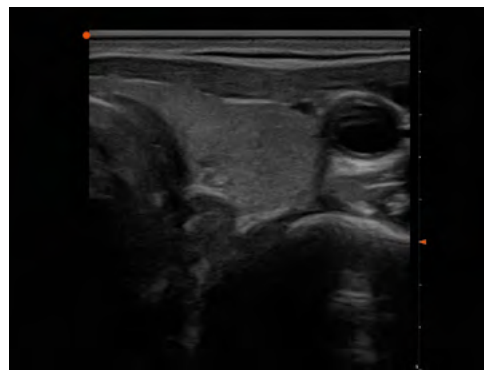
Two powerful, **portable ultrasound machines**, carefully developed to **adapt to your working environment**.

## ■ HIGH-DEFINITION IMAGING:

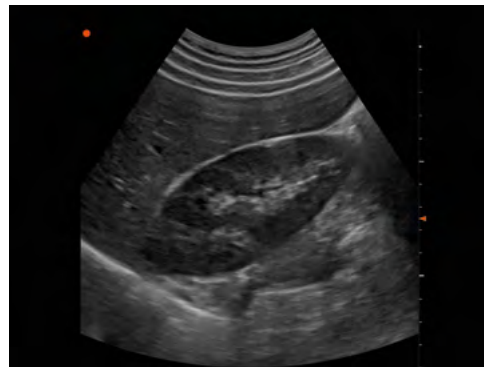
- To **refine** your diagnoses.
- To **unblock** a clinical situation.
- To **provide more comfort** when **monitoring** and **screening** certain pathologies.
- To **inform the patient** with a high-quality image.

## ■ REDESIGNED ERGONOMICS

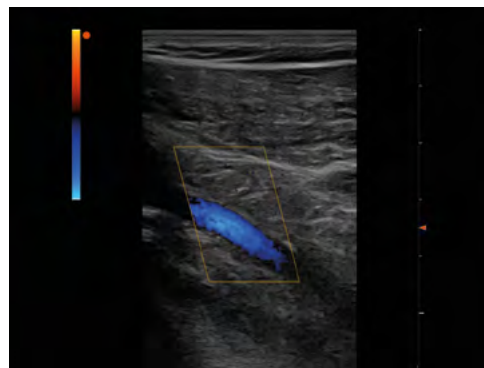
- A **simple and customisable interface** for **rapid control**.
- **Automatic settings** depending on the areas explored.
- **Customisable menus** that can be adapted to the specific needs of doctors.
- **Ultra-fast start-up** for **rapid access to the image**.



Thyroid



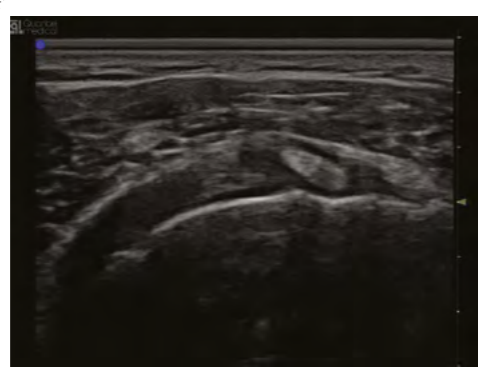
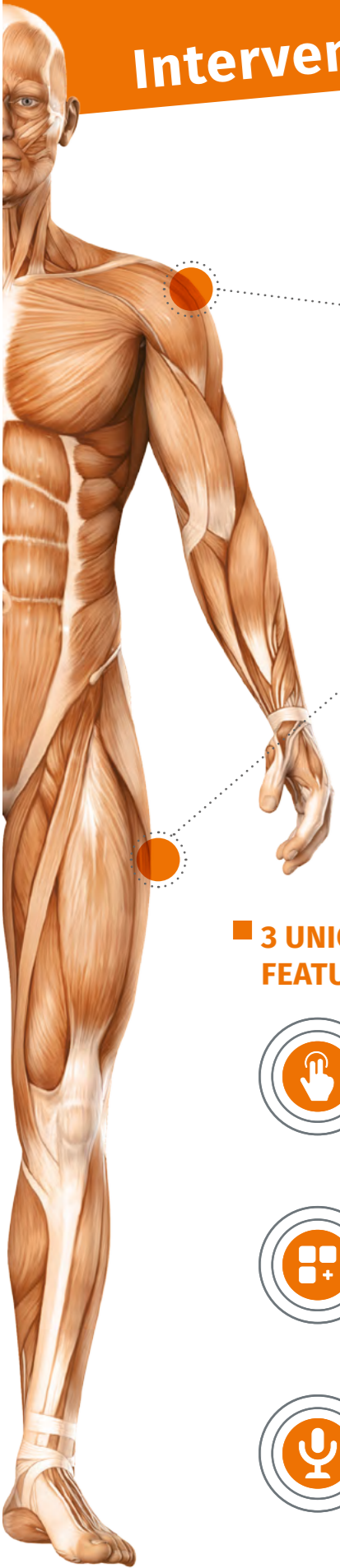
Kidney



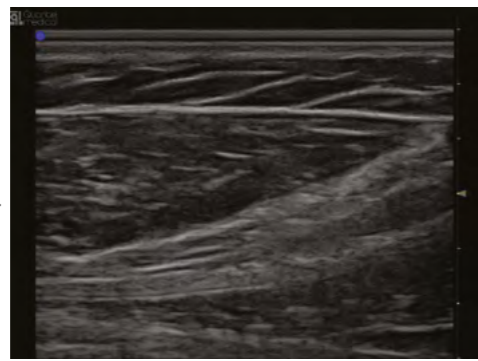
Popliteal artery



# Interventional imaging ultrasound platforms



Shoulder



Leg



## 3 UNIQUE AND INNOVATIVE FEATURES



### EvoScreen

**100% touch-sensitive interface.** Simplified cleaning due to the lack of buttons.



### EvoApp

Viewing of images and control of settings on a **remote tablet** to enrich the patient relationship.



### EvoTalk

**Voice control** to maintain total control even when both hands are used.



## PROBES

- A complete range of probes to adapt to all imaging needs.
- Ergonomic probe design for an optimum handling.
- Quick and easy change of probes: **Plug & Play.**



## CONNECTIVITY

- **Compatible** with all types of servers/software packages.
- **Facilitates** the management of patients data.
- Adapted to material constraints with a **complete connectivity:** ethernet, wifi, DICOM, HDMI and USB.

## DESIGN

- **Robust touch screen** with a wide vision angle.
- Two screen sizes for an integration of the ultrasound machine in **any type of medical environment.**

## ■ AN EFFECTIVE DIAGNOSTIC TOOL

- For an **immediate answer** to a clinical questioning.
- For a better **screening** and **monitoring of pathologies**.
- For an increasing **diagnostic autonomy**.
- For a **changing** daily practice.

## ■ A NEW PATIENT RELATIONSHIP

- **Increased security** and optimisation of **referrals** to specialists.
- **Increased comfort**: examinations in a familiar environment.
- **Informational** and **sharing** tool.

## ■ THE ULTIMATE **INTERVENTIONAL IMAGING** ULTRASOUND MACHINE

- **Battery operated** devices (providing 3 hours of life for examinations).
- **Compact size** for more **mobility**.
- Shock-absorbing case, protective shell, and backpack (available as add-ons) to **facilitate transport**.

## ■ R&D AND PRODUCTION IN **FRANCE**



# TECHNICAL SPECIFICATIONS

## EVOTOUCH / EVOTOUCH+

### GENERAL INFORMATION

#### Size

EvoTouch: 32 cm (W) x 5,8 cm (D) x 25 cm (H)  
EvoTouch+: 39 cm (W) x 7 cm (D) x 30 cm (H)

**Poids:** EvoTouch: 4 kg EvoTouch+: 5.9 kg

#### Electrical power

Supply voltage: 100/120 Vac or 220-240 Vac, 50/60 Hz;  
Power: EvoTouch: 120 W EvoTouch+: 200 W  
Power supply: Mains supply or battery (interchangeable)  
Battery life: EvoTouch: 3 hours EvoTouch+: 2 hours  
Charging time (battery): 3 hours  
Internal voltage: Max. 19 V

#### Tilting screens

Dimensions in inches: EvoTouch: 12" EvoTouch+: 15"  
LED-backlit LCD

#### Portrait or landscape mode

VESA mount  
XGA format display: Display size: 1024 x 768  
Recording area: 1024 x 768  
Image ultrasonore : 600 x 600 in landscape mode  
600 x 720 in portrait mode

Stereo sound

### IMAGING

**Grey levels:** 256

**Dynamic range:** Up to 200 dB

**Imaging modes:**

- B Mode
- Dual B Mode
- Colour Doppler Mode (CFM-B)
- Dual Colour Doppler Mode (CFM-B/B)
- Pulsed Wave Mode (PW-B)
- M Mode/Anatomic M Mode
- Power Doppler Mode (Power Doppler-B)
- Dual Power Doppler Mode (Power Doppler-B/B)

**Cineloop:** 4 Cineloop lengths (adjustable)

### CONNECTIVITY AND DATA MANAGEMENT

**Probe connectors:** EvoTouch: 1 EvoTouch+: 2

**USB ports:** EvoTouch: 2 3.0 USB ports  
EvoTouch+: 2 3.0 USB ports et 2 2.0 USB ports

1 RJ 45 connector; 1 HDMI video connector; 1 audio jack connector (EvoTouch+);  
Integrated Wifi.

**DICOM:** Store and Print

**Printers:** Installation and configuration of laser and thermal printers

**Patient files:** Import, export, and consult patient files

**Storage:** Integrated hard drive  
EvoTouch: SSD 256 GB EvoTouch+: 500 GB

### UNIQUE FEATURES

**EvoScreen** Full touch screen

**EvoApp** Consultation and adjustment on tablet

**EvoTalk** Voice command

# EvoTouch<sup>+</sup>

# EvoTouch<sup>+</sup>



Specifications are subject to change without notice. Non contractual pictures.  
©2023. EvoTouch and EvoTouch+ are registered trademarks of Quantel Medical and Lumibird Medical.  
All rights reserved

0459

**Manufacturer**  
Quantel Medical  
1, rue du Bois Joli – CS40015  
63808 Cournon d'Auvergne – FRANCE  
Tel: +33 (0)4 73 745 745  
Email: [contact@lumibirdmedical.com](mailto:contact@lumibirdmedical.com)  
ISO 13485: 2016

**Headquarters**  
Lumibird Medical  
1 Rue du Bois Joli - CS40015  
63808 Cournon d'Auvergne – FRANCE  
Tél. : +33 (0)4 73 745 745

QUANTEL MEDICAL

A brand of



LUMIBIRD<sup>®</sup>  
MEDICAL

[www.lumibirdmedical.com](http://www.lumibirdmedical.com)